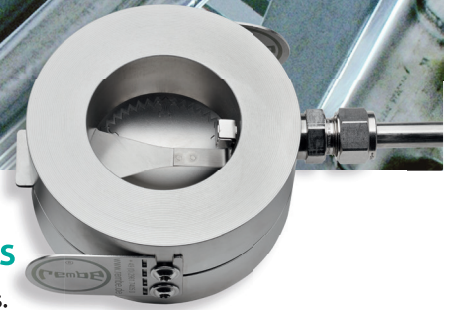
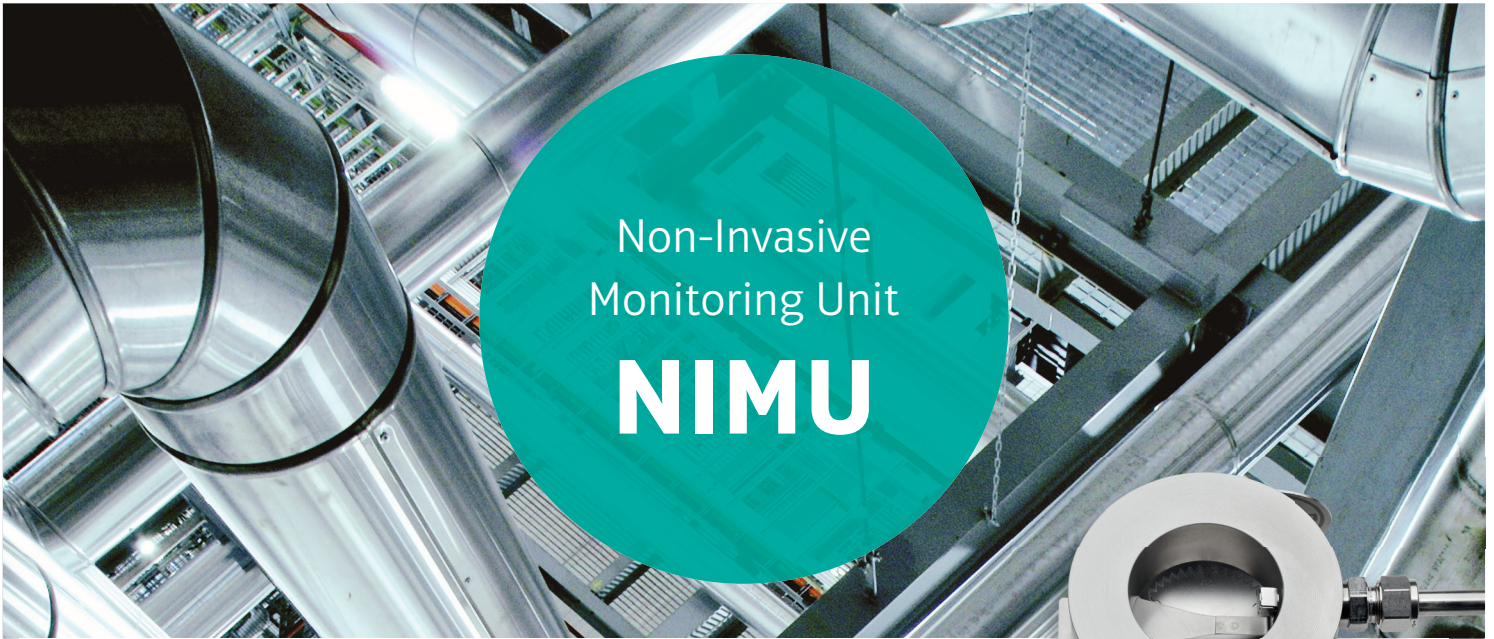




Safety is for life.™

## PRODUCT INFORMATION



### FOR REVERSE ACTING RUPTURE DISCS KUB® AND IKB®

NIMU is a reusable, non-invasive detection system. After an overpressure event, and the associated opening of the rupture disc, the outlet part of the rupture disc holder must be removed, the rupture disc replaced, and afterwards the system can be put back into operation. The days when the signalling cables also had to be routed again to the respective switching box are finally over.

**Additionally:** The process is absolutely leak-tight. The blind tapping in the holder replaces the tapping which is usually required. The absence of cable glands (required for the holder tapplings for conventional signalling cables) means that the cable glands used cannot become porous, thus preventing an escape of the process media.



ATEX  
EG-EEC type examination  
certificate no.  
IBExU15ATEX1018

Made  
in  
Germany

### Your advantages

- Totally leak tight process.
- Cost-effective signalling device.
- Full bore relief.
- Easy function testing and maintenance.
- Eliminates false alarms.
- Reusable.

### Technical data

<b>Working principle</b>	Signal Indicator, Intrinsically safe device
<b>Signal output</b>	Relays switching output (for connection to PLC)
<b>Protection class</b>	IP 67
<b>Housing material</b>	Stainless Steel 316L
<b>Cable</b>	Dual core copper cable, PTFE coated Standard 2m, longer cable on request
<b>Holder</b>	With blind tapping (1/4") in outlet part, no special holder height required. Standard inlet part
<b>Temperature</b>	-50 to +200 °C
<b>Installation</b>	Non-magnetic austenitic stainless steel holders

You can find detailed information and contact details for enquiries relating to NIMU at [www.rembe.de](http://www.rembe.de).  
Give us a call on: T +49 2961 7405-0 or contact us via email: [info@rembe.de](mailto:info@rembe.de).



Consulting. Engineering. Products. Service.

REMBE® GmbH Safety+Control

Gallbergweg 21 | 59929 Brilon, Germany | T +49 2961 7405-0 | F +49 2961 50714  
[info@rembe.de](mailto:info@rembe.de) | [www.rembe.de](http://www.rembe.de)

GBPI-NIMU-15166/5 | © REMBE | All rights reserved | Valid from 07.06.2018 | Subject to technical change without notice