

Technical data sheet


Air-operated diaphragm pump FDM 07



Air-operated diaphragm pump FDM 07

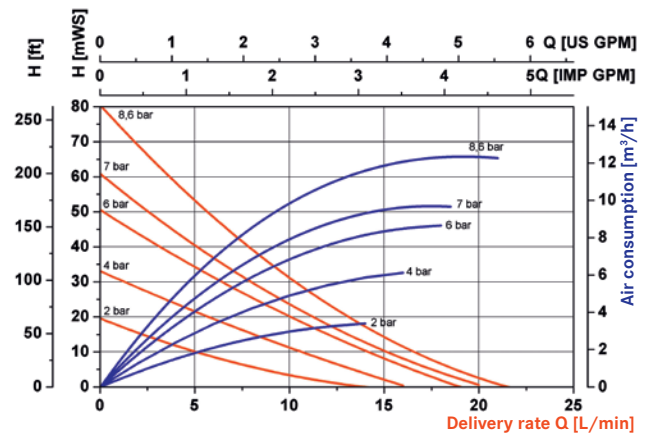


Special features:

- ▶ High energy efficiency due to low air consumption
- ▶ Suction and discharge connection with female and male threads
- ▶ Also available in Ex version 
- ▶ 100 % stall-free
- ▶ Solid size up to max. 1,6 mm
- ▶ Adapter plate available to replace the FDM 06 and other models by FDM 07
- ▶ Alternative connection positions for suction and discharge side
- ▶ Integrated sound absorber
- ▶ Oil-free operation
- ▶ Self priming

Technical data and weight	
Delivery rate max.	20 l/min*
Operating pressure max.	8,6 bar
Suction head max. (liquid-filled)	9,5 m*
Suction head, dry	4,5 m*
Viscosity max.	just capable of flowing
Max. size of solids	1,6 mm
Air consumption	10,3 m ³ /h at 6,9 bar
Weight depends on material	1,3 kg, 1,6 kg
Available materials	
Pump housing, ball seat	PP, AC (Ex)
Diaphragm	Santoprene, PTFE
Seal material	EPDM, PTFE
Connection suction and discharge side	
Female thread (hybrid)	¼ NPTF, G ¼
Male thread	¾ NPTF
Connection air	
Inlet	¼ NPTF
Connection with integrated sound absorber	¼ NPTF

Performance chart



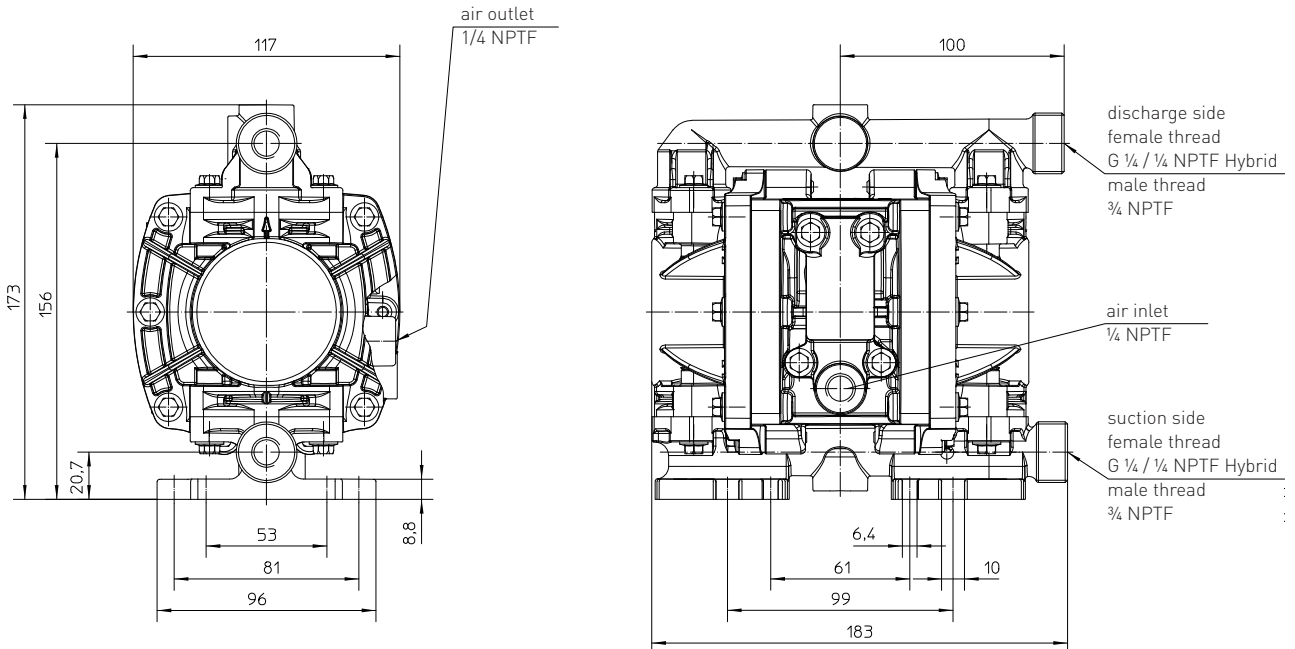
values ± 10 % measured with water (20 °C)

* depending on pump model, operating pressure and fluid

Dimensions and part numbers

Air-operated diaphragm pump FDM 07


Dimensions [mm]



Part numbers

Type	Ex	Material				Weight	Part no.
		Pump housing	Diaphragm/ball	Ball seat	Seal		
FDM 07 PP/AA		Polypropylene	Santoprene	PP	EPDM	1,3 kg	M07 40 010
FDM 07 PP/TT		Polypropylene	PTFE	PP	PTFE	1,3 kg	M07 40 100
FDM 07 AC/TT	Ex	Acetal conductive	PTFE	AC	PTFE	1,6 kg	M07 50 000



	Part no.
Adapter plate for replacement FDM 06 and other models by FDM 07	M07 70 100